



**Meghan Pump Station (RFCSP)
Solicitation Number: CO-00645
Job No.: 19-1006**

**ADDENDUM 7
November 2, 2023**

To Respondent of Record:

This addendum, applicable to the work referenced above, is an amendment to the price proposal, plans, and specifications and as such will be a part of and included in the Contract Documents. Acknowledge receipt of this addendum by entering the Addendum number and issue date on the space provided in submitted copies of the Respondent Questionnaire.

RESPONSES TO QUESTIONS

- 1. Question:** This is the first pump station, I have quoted/seen in the SAWS system, that have EMO Butterfly Valves for the Pump Control Valves. These are normally supplied as EMO Rubber Seated Ball Valves, due to their durability. Are EMO Butterfly Valves what SAWS is planning on using?

Response: The contractor shall provide ball valves for pump control for this project. See Changes to the Specifications section of this Addendum for a list of approved manufacturers for Ball Valves for the project. Valves provided for this project shall be built and tested in conformance with AWWA C507 and other requirements within the Contract Documents.

- 2. Question:** Spec Sec 15201 Item 2.2 Air Conditioner calls to provide and install two (2) Bard Model No. W24BB-XC05X5X electrical heat air conditioners. However, the specified model is not valid. I have attached the current Bard nomenclature sheet that will hopefully help confirm the model number. Please advise if the model number should be W24AY-C05XXXX5J.

Response: See changes to plans and specifications, this addendum. Confirmed. The correct model number is W24AY-C05XXXX5J. The indicated revisions to the plans and spec have been made.

CHANGES TO THE SPECIFICATIONS

- 1. General Wage Decision for Building Construction Type** - Remove the wage decision in its entirety and replace it with the revised version attached (rev. 10/13/2023 for General Decision Number TX20230231). This version should be referenced by the Respondents for this project.
- 2. Specification Section 15680 – Valves** - The list of approved manufacturers for Butterfly Valves is being revised. Approved manufacturers for Butterfly Valves for this project are:

Mueller (Linseal XP / Linseal III / Linseal XP II)
DeZurik (BAW)
Crispin Multiplex (K-Flow models 47 and 500)
Val-Matic & Manufacturing Corporation (Series 2000)

- 3. Specification Section 15680 – Valves** – Ball Valves are being added to the specification. Ball Valves shall be built and tested in conformance with AWWA C507 and other requirements within the Contract Documents Approved manufacturers for pump control Ball Valves for this project are:
Val-Matic Valve & Manufacturing Corporation
DeZurik, Inc.
GA Industries, LLC
- 4. Specification Section 15201 – Miscellaneous Equipment** – The Air Conditioner Bard Model No. was revised to W24AY-C05XXXX5J and A/C Unit ratings were updated to match the updated model number.

CHANGES TO THE PLANS

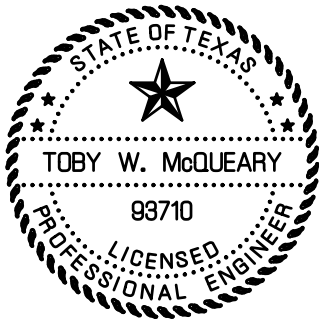
1. Replace Sheets M3 and M4 with the versions attached with this addendum.
2. Replace Sheet M6 with the version attached with this addendum.

END OF ADDENDUM 7

This Addendum is two (2) pages in its entirety with no attachments.

Attachments:

Building Wage Decision (7 pages)



11-2-2023

QUIDDITY ENGINEERING, LLC.
(F-23290)

**SECTION 15201
MISCELLANEOUS EQUIPMENT**

1.0 GENERAL

This work includes furnishing all plant, labor, equipment and materials and performing all operations required for installation of miscellaneous equipment specified herein or as shown on the drawings.

2.0 PRODUCTS

2.1 WALL-MOUNTED FANS AND ACCESSORIES

- a. The contractor shall install one (1) wall-mounted, automatic shutter mounted fiberglass air intake fan with fiberglass reinforced polypropylene propellers, capable of delivering a minimum 320 cfm free air flow at ¼ inch (0.25") static pressure (SP) and rated at no more than one twentieth horsepower ($\frac{1}{20}$ HP) in the spare room. Contractor shall furnish an OSHA approved, corrosion resistant, wire mesh safety guard and a corrosion and UV resistant weatherproof fan shroud with removable aluminum framed fiberglass (FRP) insect screen for the wall fan. The fan motor shall be a single speed, totally enclosed, sleeve or ball bearing 115-volt, 60-hertz, 1-phase type or approved substitute.
- a. The contractor shall install one (1) wall-mounted, automatic shutter mounted corrosion resistant air exhaust fan with corrosion-resistant propellers, capable of delivering a minimum 799 cfm free air flow at ¼ inch (0.25") static pressure (SP), and rated at no more than one eighth horsepower ($\frac{1}{8}$ HP) in the spare room. Contractor shall furnish an OSHA approved, corrosion resistant, wire mesh safety guard and a corrosion and UV resistant weatherproof fan shroud with removable aluminum framed insect screen for the wall fan. The fan motor shall be a single speed, totally enclosed, sleeve or ball bearing 115-volt, 60-hertz, 1-phase type or approved substitute.
- b. Provide and install two (2) twelve-inch (12") square, wall mounted fiberglass supply shutters in the spare room and air compressor room. Locate the shutters as shown in the contract drawings and details. The shutter shall open automatically when the fan is running. The shutter should close freely when the fan stops running. Provide and install a removable fiberglass insect screen with an aluminum frame attached to the weatherproof fan shroud to cover the open end outside for the fan.
- c. Contractor shall mount the air intake fan in treated wood framed square opening through the building wall as specified by the fan manufacturer. The wall fan, interior insect screen, and weatherproof fan shroud shall be attached to the treated wood frame using stainless steel or corrosion resistant hardware and the pre-drilled holes provided in the mounting flange of each component.
- d. After verifying that the wall fan is rotating correctly, weatherproof seal the unit around wall openings with an approved non-hardening, weatherproof caulk for a finished, aesthetically pleasing installation. Paint the exposed portion of the wood trimmed opening to match the building color.

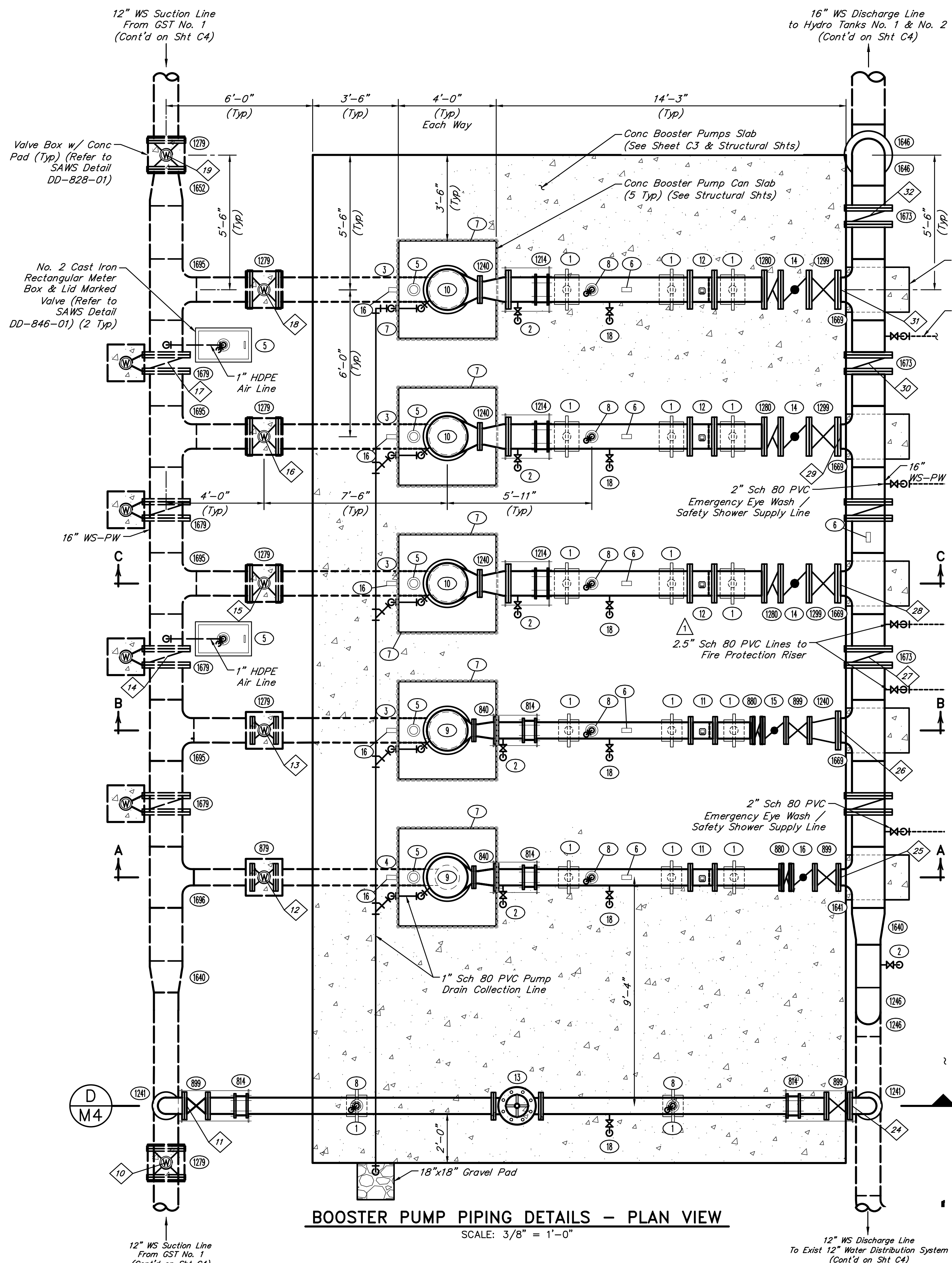
2.2 AIR CONDITIONER

- a. Provide and install two (2) Bard Model No. W24AY-C05XXXX5J electric heat air conditioner. Air conditioners and heaters are to have automatic temperature control. Air conditioner output: 24,400 BTU. Heater output: 15,700.

MISCELLANEOUS EQUIPMENT

- b. Contractor shall install unit in CMU wall block-out using an approved galvanized steel through-the-wall builder sleeve kit. Wall sleeve kit shall include internal supports, brackets, protective grill, weather-tight seals and non-corrosive hardware required for a finished, neat installation. If an approved equal wall sleeve kit is provided with a non-galvanized wall sleeve, the steel wall sleeve shall be protective coated to match the exterior finished building color as specified under Division 9 – Protective Coating & Disinfection for Potable Water Systems.

END OF SECTION



BOOSTER PUMP PIPING DETAILS - PLAN VIEW
SCALE: 3/8" = 1'-0"

PIPING CHART:

- 814 8" Restrained Flanged Coupling Adapter
- 840 8"x8" Concentric Reducer, FJ
- 879 8" NRS Gate Valve, FJ (GTV-03-101)
- 880 8" Double Disk Check Valve, FJ (DCV-03-101, DCV-03-201)
- 889 8" OS & Y Gate Valve, FJ (GTV-03-001, GST-03-002, GST-03-102, GTV-03-202)
- 1214 12" Restrained Flanged Coupling Adapter
- 1240 12"x8" Concentric Reducer, FJ
- 1241 12"x8" Tee, PE
- 1246 12"x90° Bend, PE
- 1279 12" NRS Gate Valve, FJ (GTV-03-201 to GTV-03-501)
- 1280 12" Double Disk Check Valve, FJ (DCV-03-301 to DVC-03-501)
- 1289 12" OS&Y Gate Valve, FJ (GTV-03-302, GTV-03-402 & GTV-03-502)
- 1640 16"x12" Concentric Reducer, PE
- 1641 16"x8" Tee, PEXFJ
- 1646 16"x90° Bend, PE
- 1652 16"x12" Concentric Reducer, PE x FJ
- 1669 16"x12" Tee, PE x FJ
- 1673 16" Butterfly Valve, FJ (BFV-03-005 to BFV-03-009)
- 1679 16" NRS Butterfly Valve, FJ (BFV-03-001 to BFV-03-004)
- 1685 16"x12" Tee, PE
- 1696 16"x8" Tee, PE

BOOSTER PUMP ACCESSORY CHART:

- 1 4" Adjustable Steel Pipe Support (See Detail Sheet M7)
- 2 3/4" Sample Cock Assembly (SC-03-001 & SC-03-101 to SC-03-501) (Refer to SAWS Detail DD-901-03)
- 3 18" Booster Pump Can w/ 12" Welded Steel Inlet.
- 4 12" Booster Pump Can w/ 8" Welded Steel Inlet Pipe.
- 5 1/2" Air Release Valve, APCO Model No. 50, w/ 3/32" Orifice, No. 16 Mesh, 316 Stainless Steel Screen on Discharge and Shut-Off Ball Valve. Attach to Discharge Head. (ARV-03-101 to ARV-03-501 and ARV-03-003 to ARV-03-004)
- 6 Pressure Transmitter (0-200 psi) w/ Shut-Off Ball Valve and High Pressure Cut-Off Switch (PI-03-001 to PI-03-501)
- 7 Isolation Joint (See Detail Sheet C5)
- 8 2" Combination Air Release Valve, APCO Model No. 145C, 316 Stainless Steel Screen on Discharge and Shut-Off Ball Valve. (ARV-03-102 to ARV-03-502 and ARV-03-001 to ARV-03-002)
- 9 300-gpm Jockey Booster Pump w/ 50-HP Motor (BP-03-101 to BP-03-201)
- 10 1,050-gpm Vertical Turbine Booster Pump w/ 125-HP Motor (BP-03-301 to BP-03-501)
- 11 8" Magnetic Flow Meter, FJ
- 12 12" Magnetic Flow Meter, FJ
- 13 8" Pressure Relief Valve, Cla-Val Model No. 52-01 or Approved Equal
- 14 12" Motor Operated Ball Valve, FJ
- 15 8" Motor Operated Ball Valve, FJ
- 16 Low Pressure Cut-Off Switch (PSL-03-101 to PSL-03-501)
- 17 2" Drain Tap w/ Globe Valve (Refer to SAWS Detail DD-901-03) (GLB-03-001 & GLB-03-101 to GLB-03-501)

CATHODIC PROTECTION LEGEND

- XX Test Station (See Sheet C6)
- A-X Galvanic Anode Bed (See Sheet C6)

PIPING NOTES:

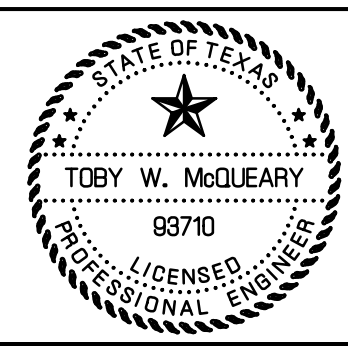
1. All pipe shall be welded steel (WS) pipe unless otherwise noted.
2. Denotes the use of a restrained joint connection.
3. Small diameter piping is shown schematically. Contractor shall field route piping, providing offsets, fittings, etc., as required.
4. All pipe penetrations shall be made through a pipe saddle.

2	11/2/23	REISSUED PER ADDENDUM NO. 7	TWM
1	10/2/23	REISSUED PER ADDENDUM NO. 1	TWM
NO. DATE		REVISIONS	APP.

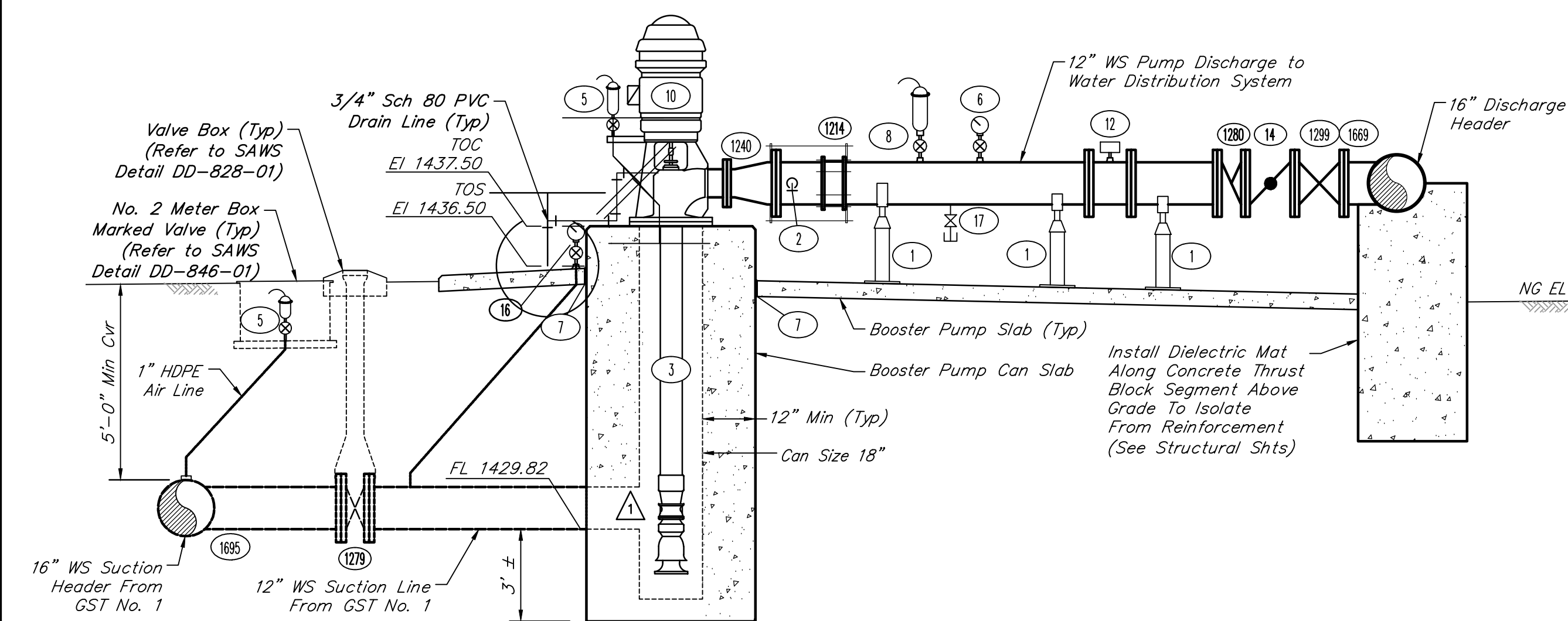
SAN ANTONIO WATER SYSTEM
MEGHAN PUMP STATION
BOOSTER PUMP PIPING & DETAILS



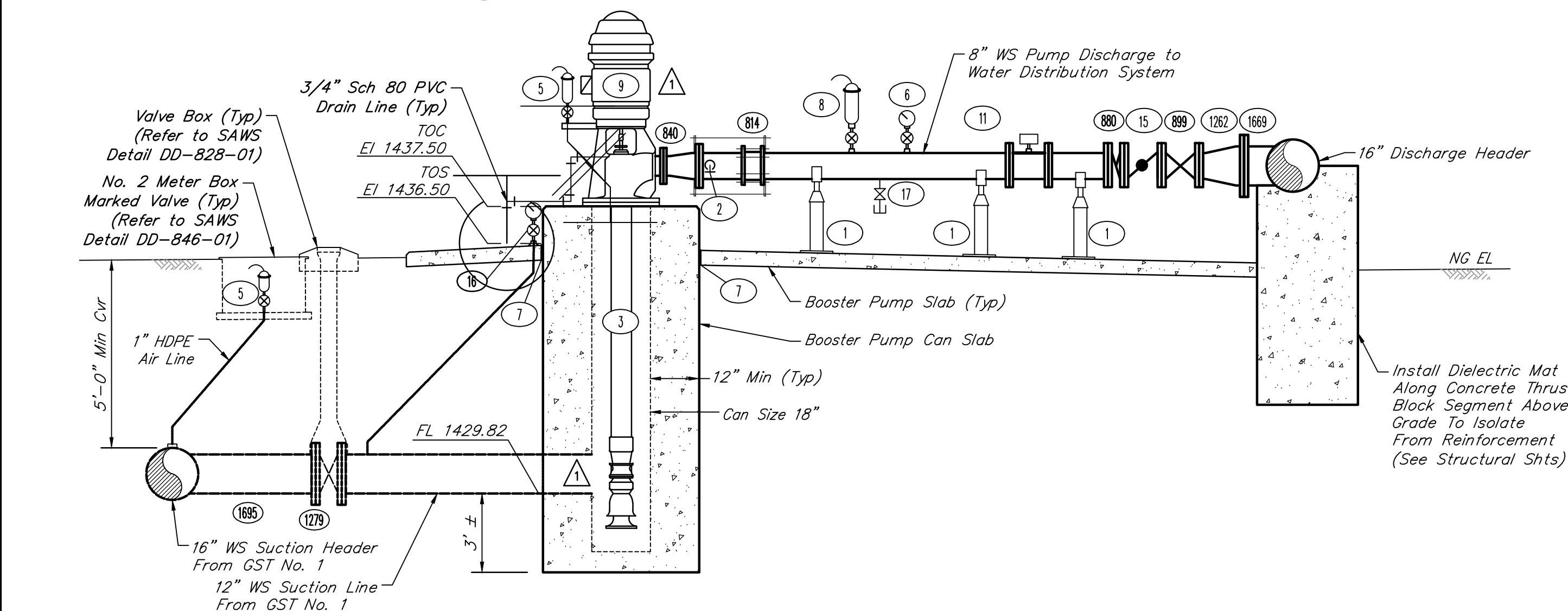
SCALE: 3/8"=1'-0" DGN. BY: JSB / LAM
DATE: AUGUST 2022 DWN. BY: JRB / CAD
JOB NO.: S0406-0045-00 DWG. NO.:
SUBMITTED: SURV. BY: F.B. NO.:



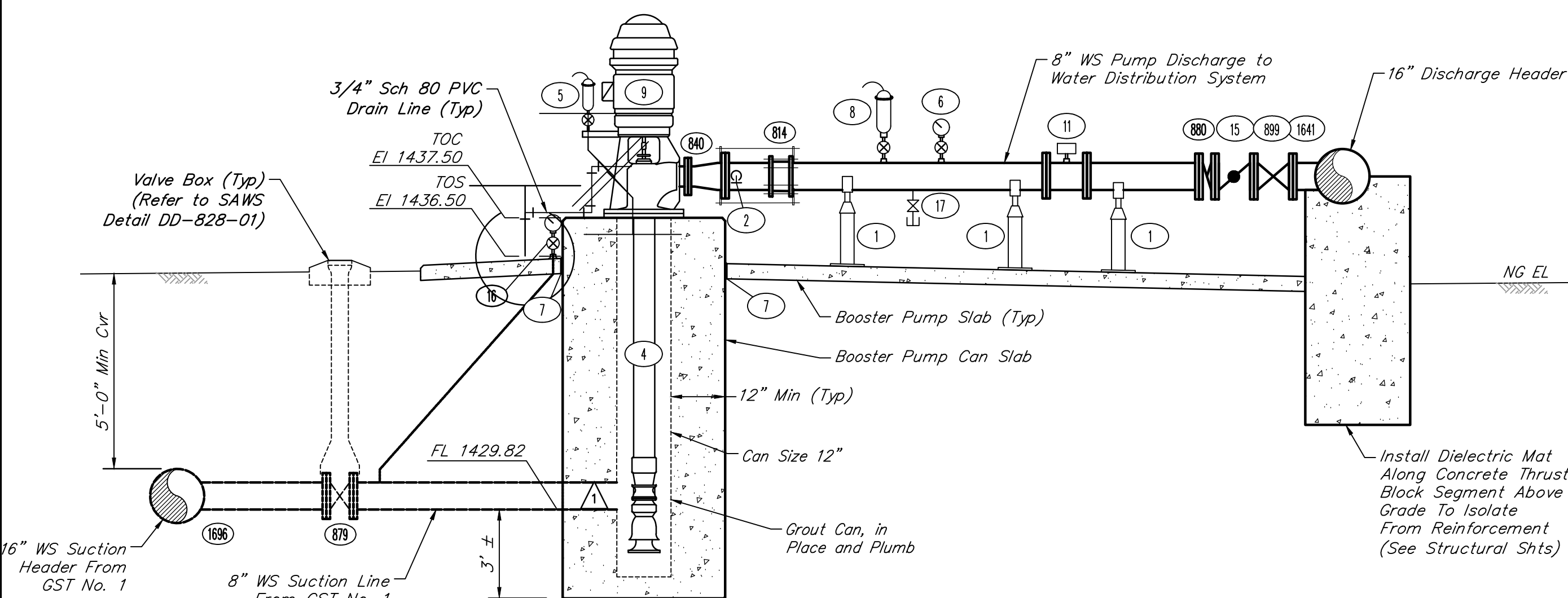
11-2-2023
SHEET NO. **M3**
21 OF 67



C 12" PIPING PROFILE VIEW
SCALE: 3/8" = 1'-0"



B 8" PIPING PROFILE VIEW
SCALE: 3/8" = 1'-0"



A 8" PIPING PROFILE VIEW
SCALE: 3/8" = 1'-0"

- ① 4" Adjustable Steel Pipe Support (See Detail Sheet M7)
- ② 3/4" Sample Cock Assembly (SC-03-001 & SC-03-101 to SC-03-501) (Refer to SAWS Detail DD-901-03)
- ③ 18" Booster Pump Can w/ 12" Welded Steel Inlet.
- ④ 12" Booster Pump Can w/ 8" Welded Steel Inlet Pipe.
- ⑤ 1/2" Air Release Valve, APCO Model No. 50, w/ 3/32" Orifice, No. 16 Mesh, 316 Stainless Steel Screen on Discharge and Shut-Off Ball Valve. Attach to Discharge Head. (ARV-03-101 to ARV-03-501 and ARV-03-003 to ARV-03-004)

BOOSTER PUMP ACCESSORY CHART:

- ⑥ Pressure Transmitter (0-200 psi) w/ Shut-Off Ball Valve and High Pressure Cut-Off Switch (PI-03-001 to PI-03-501)
- ⑦ Isolation Joint (See Detail Sheet C5)
- ⑧ 2" Combination Air Release Valve, APCO Model No. 143C, 316 Stainless Steel Screen on Discharge and Shut-Off Ball Valve. (ARV-03-001 to ARV-03-502 and ARV-03-001 to ARV-03-002)
- ⑨ 300-gpm Jockey Booster Pump w/ 50-HP Motor (BP-03-101 to BP-03-201)
- ⑩ 1,050-gpm Vertical Turbine Booster Pump w/ 125-HP Motor (BP-03-301 to BP-03-501)
- ⑪ 8" Magnetic Flow Meter, FJ
- ⑫ 12" Magnetic Flow Meter, FJ

NOTES:

1. Apply paint to all welds, threads and any areas scraped during construction.
2. Booster pump can be installed per Hydraulic Institute Standards.
3. Booster pump can elevations represent the minimum required elevations. Actual elevations may vary based on approved manufacturer shop drawings.
4. Contractor to verify the straight pipe length required per Magnetic Flow Meter manufacturer.
5. The Booster Pump Station shall comply with SAWS Details DD-901-01, DD-901-02, and DD-901-03.

PIPING CHART:

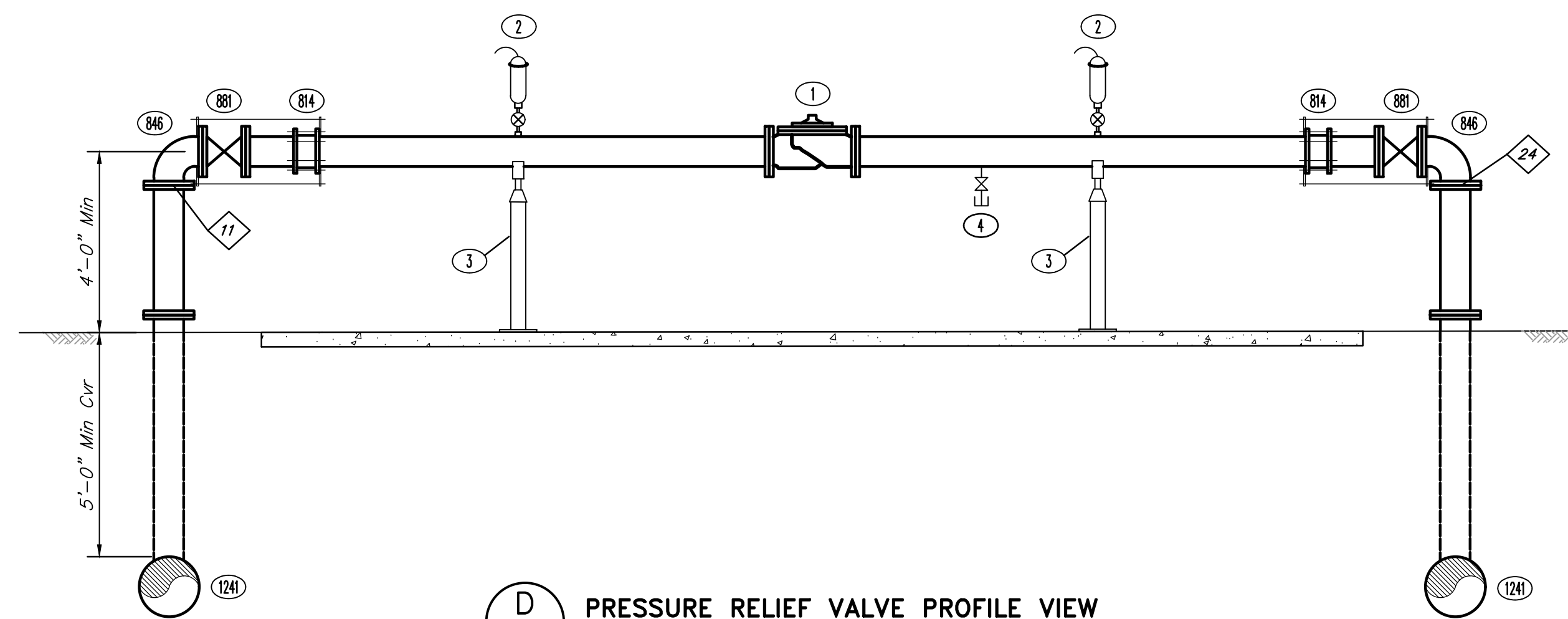
- ⑧4 8" Restrained Flange Coupling Adaptor
- ⑧6 8"x90" Bend, FJ
- ⑧8 8" OS & Y Gate Valve, FJ
- ⑫4 12"x8" Tee, PE

ACCESSORY CHART:

- ① 8" Pressure Relief Valve, Cla-Val Model No. 52-01 or Approved Equal
- ② 1" Combination Air Release Valve, APCO Model No. 143C, 316 Stainless Steel Screen on Discharge and Shut-Off Ball Valve.
- ③ 4" Steel Adjustable Steel Pipe Support (See Detail Sheet M8)
- ④ 2" Drain Tap (Refer to SAWS Detail DD-901-03) (GLB-03-001)

PIPING NOTES:

1. All pipe shall be welded steel (WS) pipe unless otherwise noted.
2. Small diameter piping is shown schematically. Contractor shall field route piping, providing offsets, fittings, etc., as required.
3. All pipe penetrations shall be made through a pipe saddle.



D PRESSURE RELIEF VALVE PROFILE VIEW
SCALE: 3/8" = 1'-0"

CATHODIC PROTECTION LEGEND

- ⓧ Test Station (See Sheet C6)
- ⓧ-X Galvanic Anode Bed (See Sheet C6)

2	11/2/23	REISSUED PER ADDENDUM NO. 7	TWM
1	10/2/23	REISSUED PER ADDENDUM NO. 1	TWM
NO.	DATE	REVISIONS	APP.

SAN ANTONIO WATER SYSTEM

MEGHAN PUMP STATION

BOOSTER PUMP DETAILS



Texas Board of Professional Engineers and Land Surveyors Reg. No. F-23290
4302 Lockhill-Spring Road, Suite 100-San Antonio, Texas 78249-1110

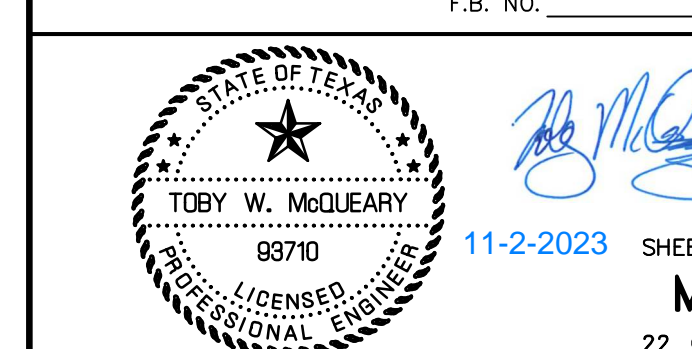
SCALE: AS SHOWN DGN. BY: JSB / LAM

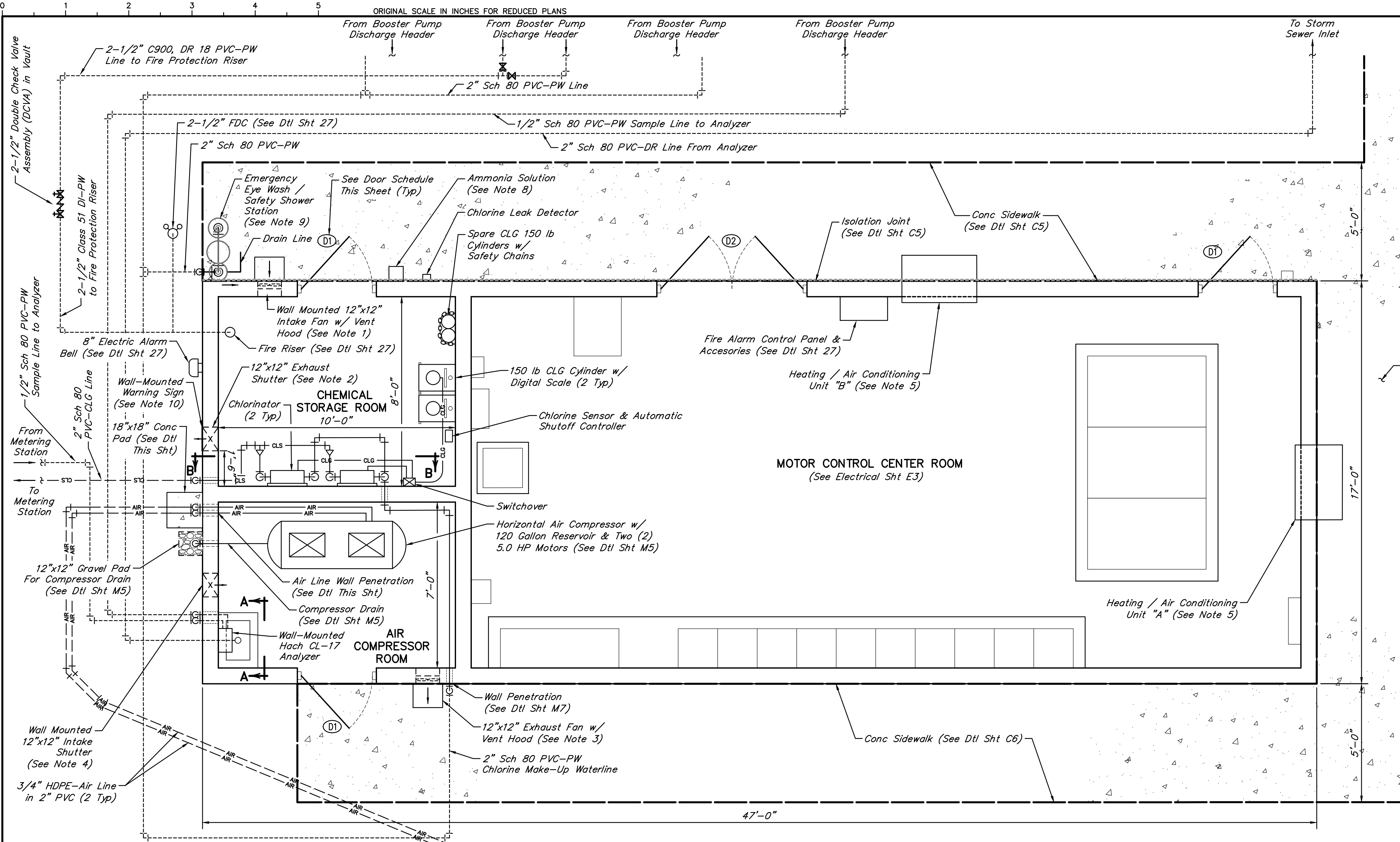
DATE: AUGUST 2022 DWN. BY: JRB

JOB NO.: S0406-0045-00 DWG. NO.:

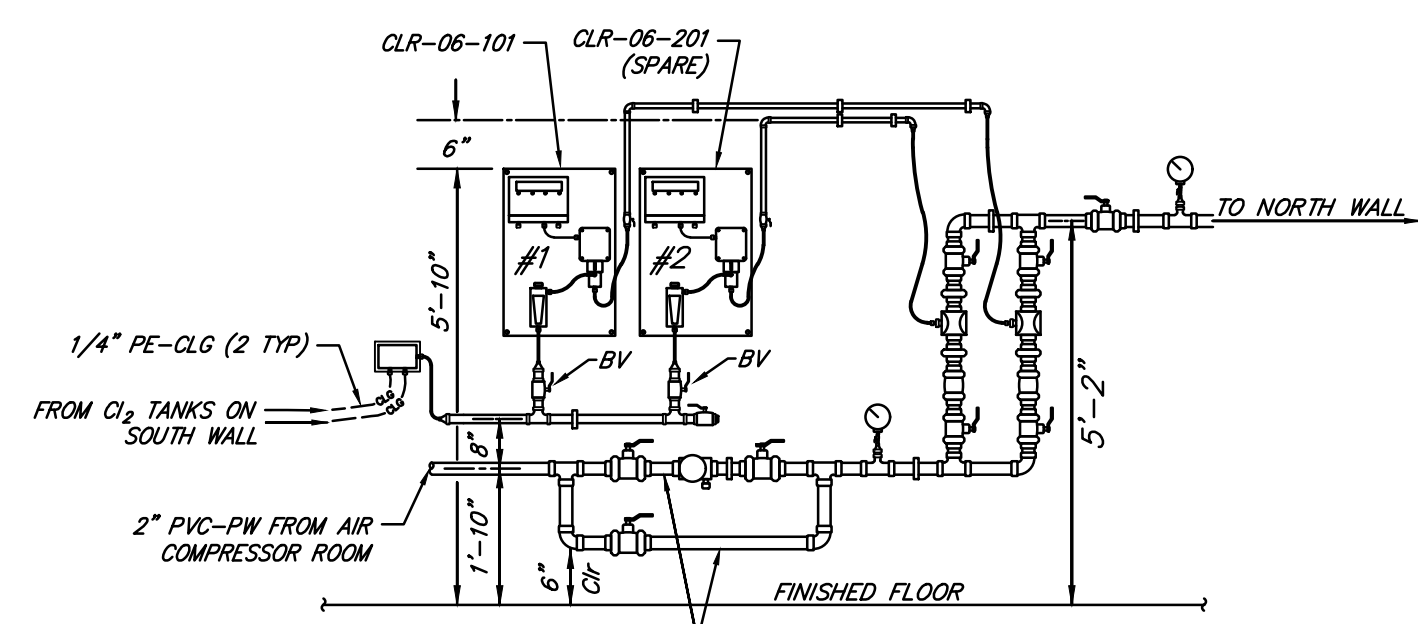
SUBMITTED: SURV. BY: F.B. NO.:

11-2-2023 SHEET NO. M4 22 OF 67

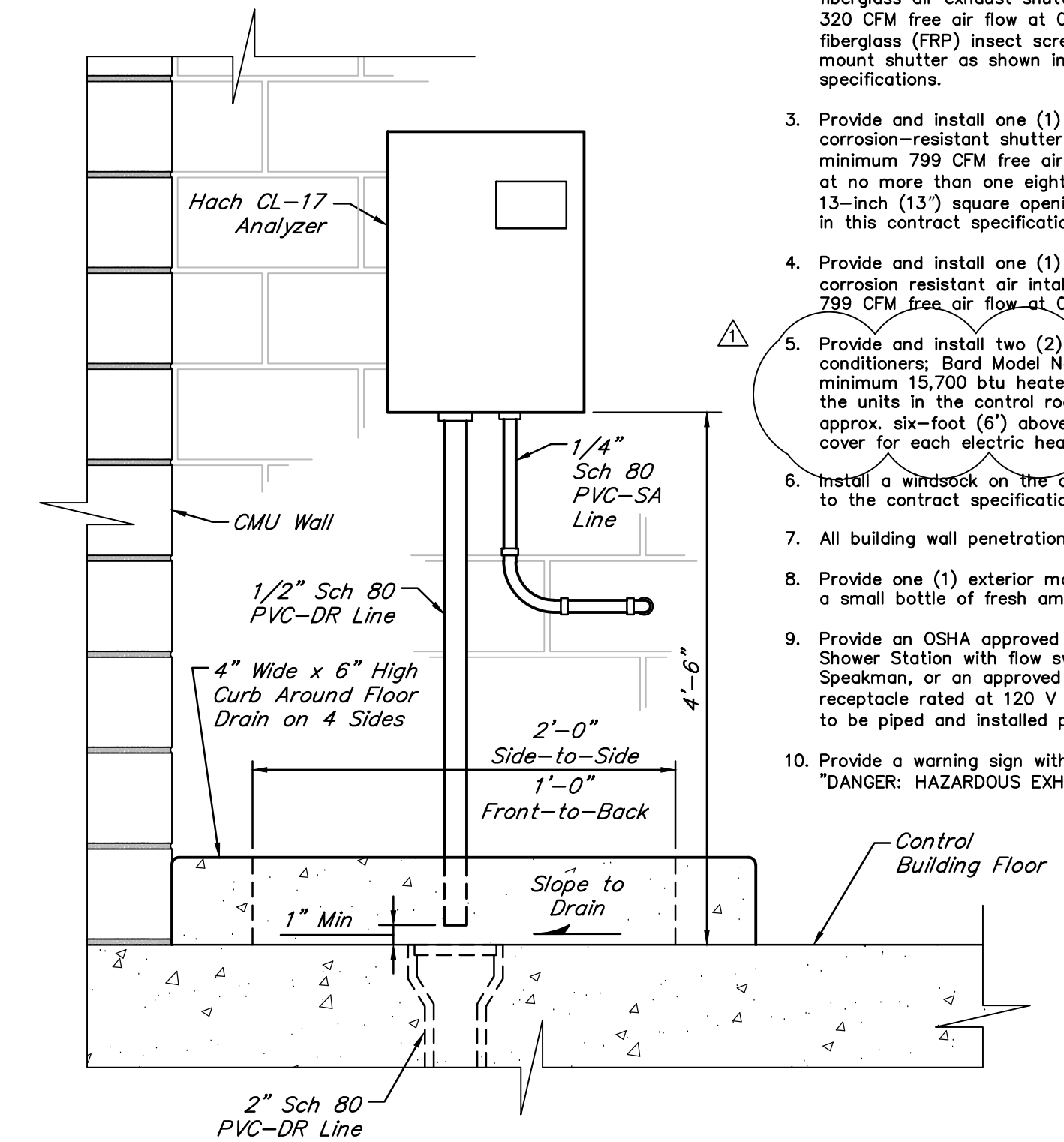




CONTROL BUILDING PLAN
SCALE: 3/8" = 1'-0"



VIEW "B-B"
NOT TO SCALE



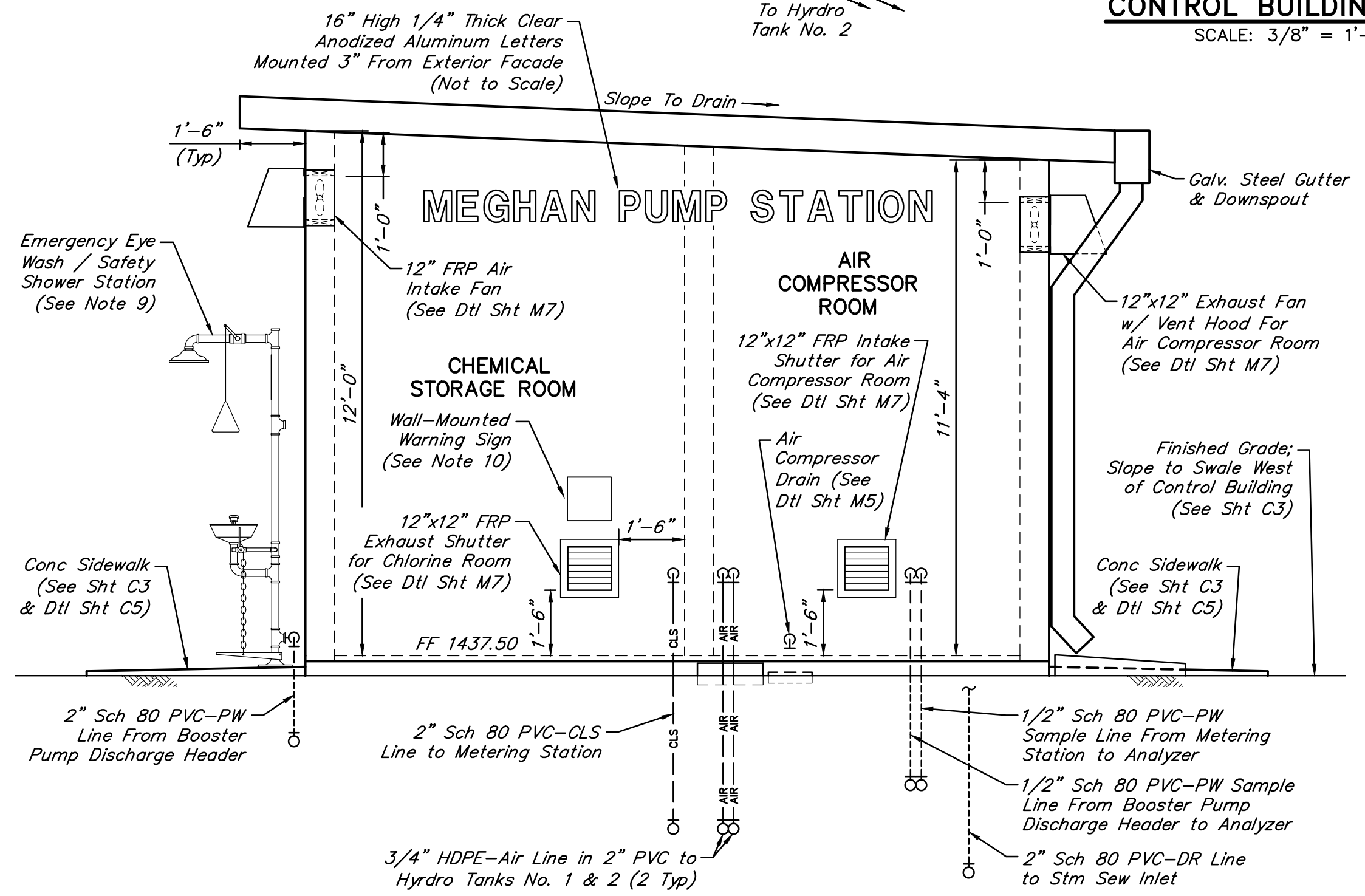
VIEW "A-A"
NOT TO SCALE

CONTROL BUILDING EQUIPMENT NOTES:

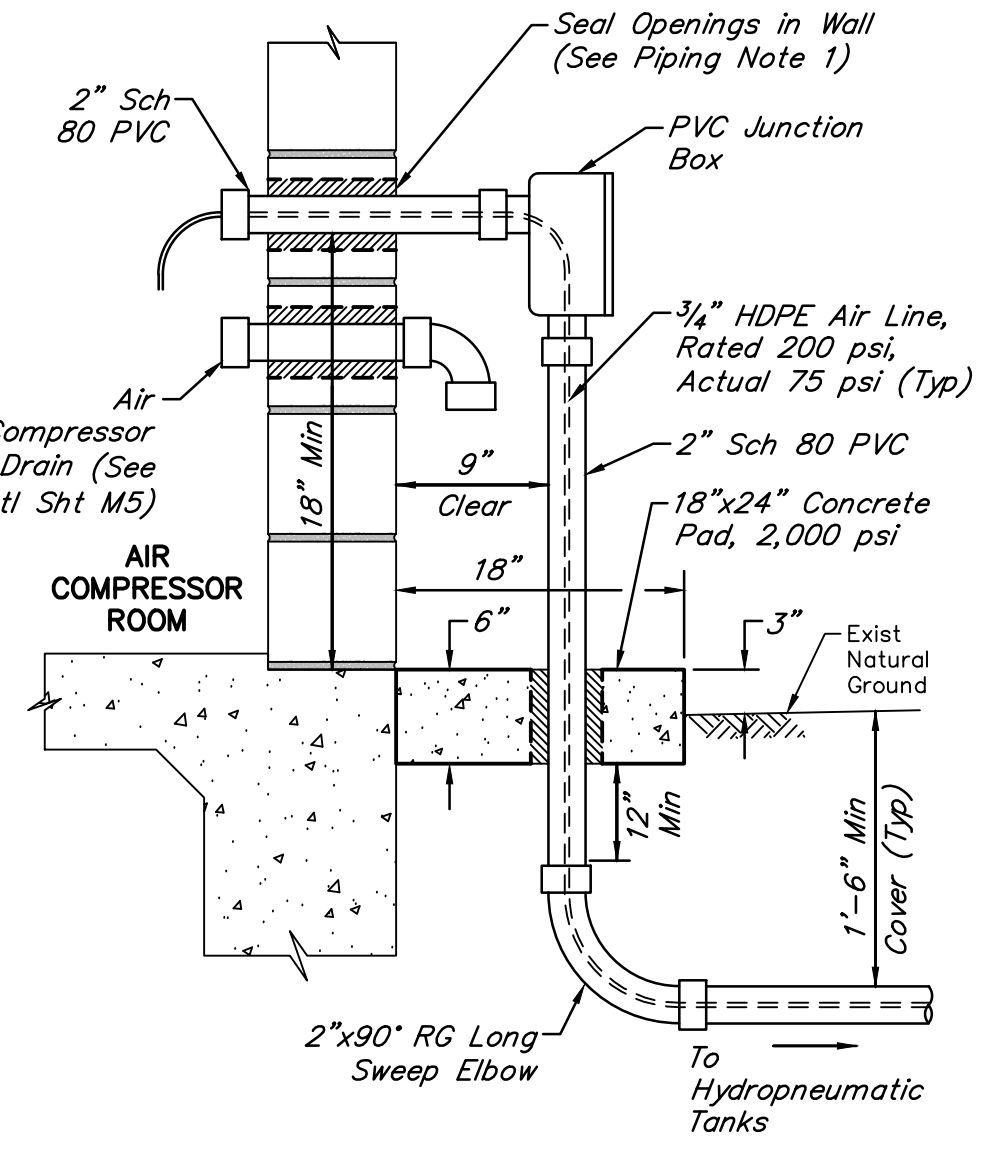
- Provide and install one (1) wall-mounted, automatic shutter mounted fiberglass air intake fan with fiberglass reinforced polypropylene propellers, capable of delivering a minimum 320 CFM free air flow at 1/4-inch (0.25") static pressure (SP), and rated at no more than one twentieth horsepower (1/20 HP) in the chlorine storage room. Contractor shall furnish an OSHA wire mesh safety guard and a corrosion and UV resistant weatherproof fan shroud with removable framed fiberglass (FRP) insect screen for wall fan. The fan motor shall be a single speed, totally enclosed, sleeve or ball bearing 115-volt, 60-hertz type or approved substitute. Locate and mount fan as shown in details on Sheet M8 and as specified in the contract specifications.
- Provide and install one (1) 12-inch (12") square, wall-mounted, gravity operated fiberglass air exhaust shutters. Shutter shall be capable of providing a minimum 320 CFM free air flow at 0.25" SP. Contractor shall furnish a removable framed fiberglass (FRP) insect screen over wall opening for each shutter. Locate and mount shutter as shown in details on Sheet M8 and as specified in the contract specifications.
- Provide and install one (1) 12-inch (12") diameter wall-mounted, automatic corrosion-resistant shutter mounted air exhaust fan capable of delivering a minimum 799 CFM free air flow at 1/4-inch (.25") static pressure (SP), and rated at no more than one eighth (1/8 HP) in the bleach storage room. Mount in 13-inch (13") square opening, as shown in details on this sheet and as specified in this contract specification.
- Provide and install one (1) 12-inch (12") square, wall-mounted, gravity operated corrosion resistant air intake / exhaust shutter capable of delivering a minimum 799 CFM free air flow at 0.25" SP in the bleach storage room.
- Provide and install two (2) through the wall exterior mounted electric heat air conditioners: Bard Model No. W24A7-C05XXXS1 or approved equal, capable of a minimum 15,700 btu heater output and 24,400 btu air conditioner output. Mount the units in the control room using a through wall sleeve, with top of units approx. six-foot (6') above the finished floor. Provide a thermostat with locking cover for each electric heat air conditioner.
- Install a windsack on the control building visible from all directions and according to the contract specifications.
- All building wall penetrations shall be tightly sealed with an approved grommet.
- Provide one (1) exterior mounted box with clear cover labeled "Ammonia". Provide a small bottle of fresh ammonia solution.
- Provide an OSHA approved PVC / PVC coated Emergency Eye Wash / Safety Shower Station with flow switch, manufactured by Guardian Equipment, Haws, Speakman, or an approved equal, complete with plug for standard NEMA 5-20R receptacle rated at 120 V for heat trace and freeze resistant valve buried at 24" to be piped and installed per Manufacturer's Specifications.
- Provide a warning sign with at least four-inch (4") high letters that reads "DANGER: HAZARDOUS EXHAUST".

PIPING NOTES:

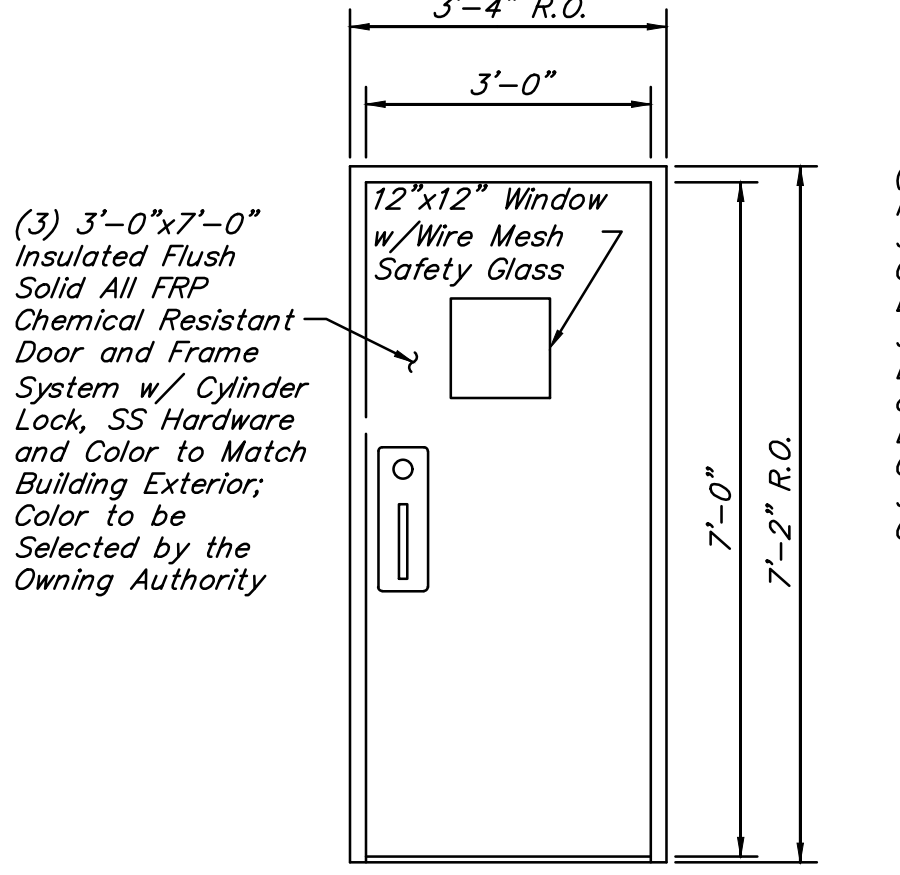
- All piping penetrations through the control building walls shall be tightly sealed with approved grommet.
- Piping schematically shown. Locate along wall w/ FRP supports and 3/16 SST hardware. Contractor to provide piping supports and wall mounts inside building.
- Contractor shall construct all poly tube solution lines encased in SCH 80 PVC electrical conduit and use only long sweep elbows to allow tubing to be easily repaired and/or replaced in the future.



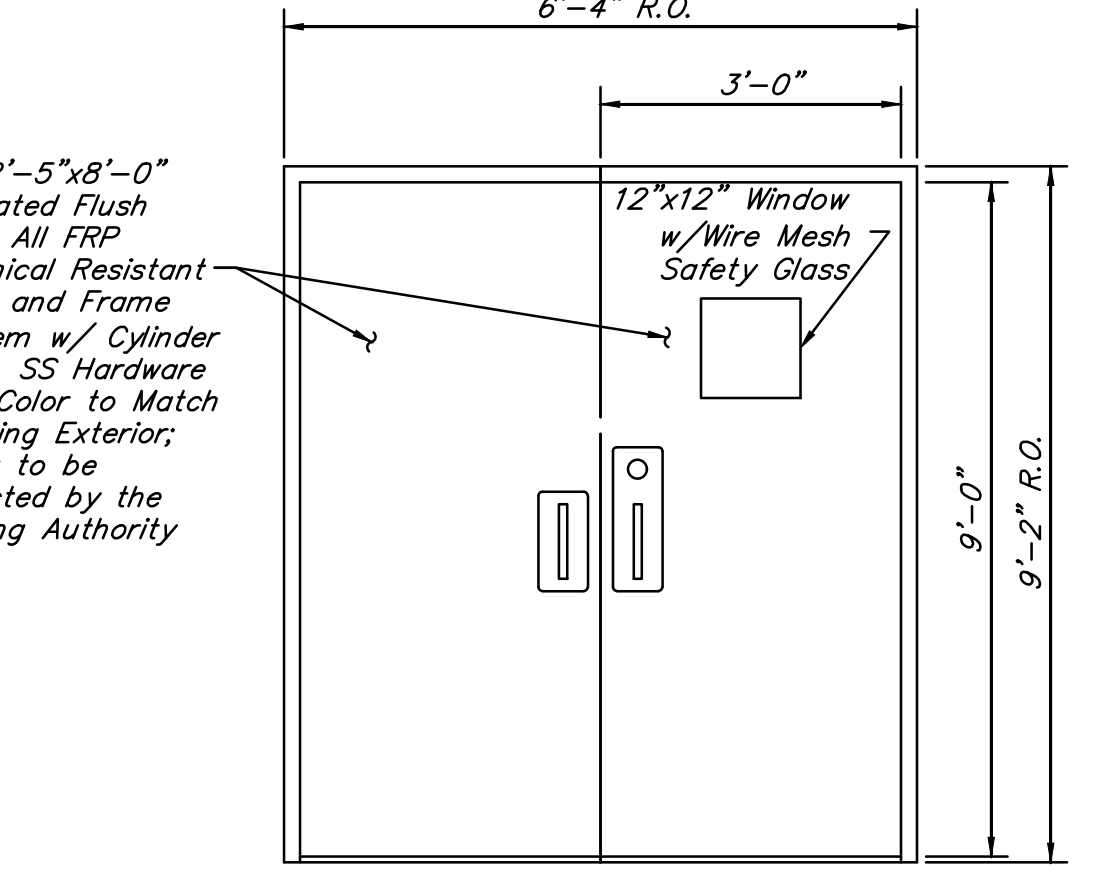
BUILDING ELEVATION - NORTH SIDE (LOOKING SOUTH)
SCALE: 3/8" = 1'-0"



AIR LINE WALL PENETRATION DETAIL
NOT TO SCALE



TYPICAL SINGLE DOOR DETAIL
NOT TO SCALE



TYPICAL DUAL DOOR DETAIL
NOT TO SCALE

DOOR SCHEDULE	
No.	DESCRIPTION
D1	36" WIDE x 84" WALK-IN FRP CHEMICAL RESISTANT DOOR
D2	72" WIDE x 108" DUAL WALK-IN FRP CHEMICAL RESISTANT DOORS

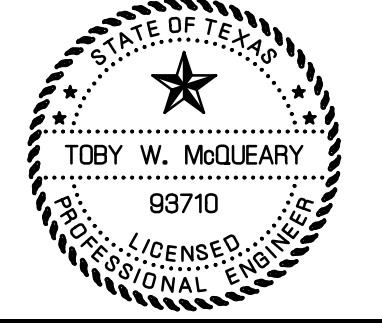
11.2.23	REVISIONS FOR ADDENDUM NO. 7	TWM
NO. DATE	REVISIONS	APP.

SAN ANTONIO WATER SYSTEM

MEGHAN PUMP STATION
CONTROL BUILDING & ACCESSORIES DETAILS



SCALE: AS SHOWN DGN. BY: JSB / LAM
DATE: AUGUST 2022 DWN. BY: JRB / CAD
JOB NO. S0406-0045-00 DWG. NO. _____
SUBMITTED: _____ SURV. BY: _____
F.B. NO. _____



X:\S0406\S0406-0045-00 Backbus Regional Pump Station, San Ant,2 Design Phase\CAD\Backbus Booster Station\S0406-0045-00 BPP-CB.dwg

"General Decision Number: TX20230231 10/13/2023

Superseded General Decision Number: TX20220231

State: Texas

Construction Type: Building

County: Bexar County in Texas.

BUILDING CONSTRUCTION PROJECTS (does not include single family homes or apartments up to and including 4 stories).

Note: Contracts subject to the Davis-Bacon Act are generally required to pay at least the applicable minimum wage rate required under Executive Order 14026 or Executive Order 13658. Please note that these Executive Orders apply to covered contracts entered into by the federal government that are subject to the Davis-Bacon Act itself, but do not apply to contracts subject only to the Davis-Bacon Related Acts, including those set forth at 29 CFR 5.1(a)(2)-(60).

If the contract is entered into on or after January 30, 2022, or the contract is renewed or extended (e.g., an option is exercised) on or after January 30, 2022: Executive Order 14026 generally applies to the contract. The contractor must pay all covered workers at least \$16.20 per hour (or the applicable wage rate listed on this wage determination, if it is higher) for all hours spent performing on the contract in 2023.

If the contract was awarded on or between January 1, 2015 and January 29, 2022, and the contract is not renewed or extended on or after January 30, 2022: Executive Order 13658 generally applies to the contract. The contractor must pay all covered workers at least \$12.15 per hour (or the applicable wage rate listed on this wage determination, if it is higher) for all hours spent performing on that contract in 2023.

The applicable Executive Order minimum wage rate will be adjusted annually. If this contract is covered by one of the Executive Orders and a classification considered necessary for performance of work on the contract does not appear on this wage determination, the contractor must still submit a conformance request.

Additional information on contractor requirements and worker protections under the Executive Orders is available at <http://www.dol.gov/whd/govcontracts>.

Modification Number	Publication Date
0	01/06/2023
1	01/13/2023

2 02/03/2023
 3 04/14/2023
 4 08/25/2023
 5 09/01/2023
 6 10/13/2023

ASBE0087-014 06/04/2023

Rates Fringes

ASBESTOS WORKER/HEAT & FROST
 INSULATOR (Duct, Pipe and
 Mechanical System Insulation)....\$ 28.95 8.39

* BOIL0074-003 07/01/2023

Rates Fringes

BOILERMAKER.....\$ 37.00 24.64

ELEC0060-003 06/01/2022

Rates Fringes

ELECTRICIAN (Communication
 Technician Only).....\$ 31.95 15%+6.41

ELEC0060-004 06/01/2022

Rates Fringes

ELECTRICIAN (Excludes Low
 Voltage Wiring).....\$ 31.95 15%+6.41

ELEV0081-001 01/01/2023

Rates Fringes

ELEVATOR MECHANIC.....\$ 46.83 37.335+a+b

FOOTNOTES:

a. 6% under 5 years based on regular hourly rate for all
 hours worked. 8% over 5 years based on regular hourly rate
 for all hours worked.

b. Holidays: New Year's Day; Memorial Day; Independence Day;
 Labor Day; Thanksgiving Day; Friday after Thanksgiving Day;
 Christmas Day; and Veterans Day.

ENGI0450-002 04/01/2014

Rates Fringes

POWER EQUIPMENT OPERATOR
 Cranes.....\$ 34.85 9.85

IRON0066-013 06/01/2023

Rates Fringes

IRONWORKER, STRUCTURAL.....\$ 26.00 7.53

IRON0084-011 06/01/2023

	Rates	Fringes
IRONWORKER, ORNAMENTAL.....	\$ 27.51	8.13

 PLUM0142-009 07/01/2023

	Rates	Fringes
HVAC MECHANIC (Electrical Temperature Control Installation & Unit Installation Only).....	\$ 35.95	11.25
PIPEFITTER (Including HVAC Pipe Installation).....	\$ 35.95	11.25
Including HVAC Pipe Installation		
PLUMBER.....	\$ 35.95	11.25
Excludes HVAC Pipe Installation		

 SFTX0669-002 04/01/2023

	Rates	Fringes
SPRINKLER FITTER (Fire Sprinklers).....	\$ 34.60	23.30

 SHEE0067-004 07/03/2023

	Rates	Fringes
Sheet metal worker Excludes HVAC Duct Installation.....	\$ 30.24	15.89
HVAC Duct Installation Only,	\$ 30.24	15.89

 * SUTX2014-006 07/21/2014

	Rates	Fringes
BRICKLAYER.....	\$ 22.15	0.00
CARPENTER (Acoustical Ceiling Installation Only).....	\$ 17.83	0.00
CARPENTER (Form Work Only).....	\$ 13.63 **	0.00
CARPENTER, Excludes Acoustical Ceiling Installation, Drywall Hanging, Form Work, and Metal Stud Installation.....	\$ 16.86	4.17
CAULKER.....	\$ 15.00 **	0.00
CEMENT MASON/CONCRETE FINISHER...	\$ 22.27	5.30
DRYWALL FINISHER/TAPER.....	\$ 13.81 **	0.00
DRYWALL HANGER AND METAL STUD INSTALLER.....	\$ 15.18 **	0.00
ELECTRICIAN (Low Voltage Wiring Only).....	\$ 20.39	3.04
IRONWORKER, REINFORCING.....	\$ 12.27 **	0.00

LABORER: Common or General.....	\$ 10.75 **	0.00
LABORER: Mason Tender - Brick...	\$ 11.88 **	0.00
LABORER: Mason Tender - Cement/Concrete.....	\$ 12.00 **	0.00
LABORER: Pipelayer.....	\$ 11.00 **	0.00
LABORER: Roof Tearoff.....	\$ 11.28 **	0.00
LABORER: Landscape and Irrigation.....	\$ 8.00 **	0.00
OPERATOR: Backhoe/Excavator/Trackhoe.....	\$ 15.98 **	0.00
OPERATOR: Bobcat/Skid Steer/Skid Loader.....	\$ 14.00 **	0.00
OPERATOR: Bulldozer.....	\$ 14.00 **	0.00
OPERATOR: Drill.....	\$ 14.50 **	0.00
OPERATOR: Forklift.....	\$ 12.50 **	0.00
OPERATOR: Grader/Blade.....	\$ 23.00	5.07
OPERATOR: Loader.....	\$ 12.79 **	0.00
OPERATOR: Mechanic.....	\$ 18.75	5.12
OPERATOR: Paver (Asphalt, Aggregate, and Concrete).....	\$ 16.03 **	0.00
OPERATOR: Roller.....	\$ 12.00 **	0.00
PAINTER (Brush, Roller and Spray), Excludes Drywall Finishing/Taping.....	\$ 13.07 **	0.00
ROOFER.....	\$ 12.00 **	0.00
TILE FINISHER.....	\$ 11.32 **	0.00
TILE SETTER.....	\$ 14.94 **	0.00
TRUCK DRIVER: Dump Truck.....	\$ 12.39 **	1.18
TRUCK DRIVER: Flatbed Truck.....	\$ 19.65	8.57
TRUCK DRIVER: Semi-Trailer Truck.....	\$ 12.50 **	0.00
TRUCK DRIVER: Water Truck.....	\$ 12.00 **	4.11

WELDERS - Receive rate prescribed for craft performing operation to which welding is incidental.

=====
 ** Workers in this classification may be entitled to a higher minimum wage under Executive Order 14026 (\$16.20) or 13658 (\$12.15). Please see the Note at the top of the wage

determination for more information.

Note: Executive Order (EO) 13706, Establishing Paid Sick Leave for Federal Contractors applies to all contracts subject to the Davis-Bacon Act for which the contract is awarded (and any solicitation was issued) on or after January 1, 2017. If this contract is covered by the EO, the contractor must provide employees with 1 hour of paid sick leave for every 30 hours they work, up to 56 hours of paid sick leave each year. Employees must be permitted to use paid sick leave for their own illness, injury or other health-related needs, including preventive care; to assist a family member (or person who is like family to the employee) who is ill, injured, or has other health-related needs, including preventive care; or for reasons resulting from, or to assist a family member (or person who is like family to the employee) who is a victim of, domestic violence, sexual assault, or stalking. Additional information on contractor requirements and worker protections under the EO is available at <https://www.dol.gov/agencies/whd/government-contracts>.

Unlisted classifications needed for work not included within the scope of the classifications listed may be added after award only as provided in the labor standards contract clauses (29CFR 5.5 (a) (1) (ii)).

The body of each wage determination lists the classification and wage rates that have been found to be prevailing for the cited type(s) of construction in the area covered by the wage determination. The classifications are listed in alphabetical order of ""identifiers"" that indicate whether the particular rate is a union rate (current union negotiated rate for local), a survey rate (weighted average rate) or a union average rate (weighted union average rate).

Union Rate Identifiers

A four letter classification abbreviation identifier enclosed in dotted lines beginning with characters other than ""SU"" or ""UAVG"" denotes that the union classification and rate were prevailing for that classification in the survey. Example: PLUM0198-005 07/01/2014. PLUM is an abbreviation identifier of the union which prevailed in the survey for this classification, which in this example would be Plumbers. 0198 indicates the local union number or district council number where applicable, i.e., Plumbers Local 0198. The next number, 005 in the example, is an internal number used in processing the wage determination. 07/01/2014 is the effective date of the most current negotiated rate, which in this example is July 1, 2014.

Union prevailing wage rates are updated to reflect all rate changes in the collective bargaining agreement (CBA) governing this classification and rate.

Survey Rate Identifiers

Classifications listed under the ""SU"" identifier indicate that no one rate prevailed for this classification in the survey and the published rate is derived by computing a weighted average rate based on all the rates reported in the survey for that

classification. As this weighted average rate includes all rates reported in the survey, it may include both union and non-union rates. Example: SULA2012-007 5/13/2014. SU indicates the rates are survey rates based on a weighted average calculation of rates and are not majority rates. LA indicates the State of Louisiana. 2012 is the year of survey on which these classifications and rates are based. The next number, 007 in the example, is an internal number used in producing the wage determination. 5/13/2014 indicates the survey completion date for the classifications and rates under that identifier.

Survey wage rates are not updated and remain in effect until a new survey is conducted.

Union Average Rate Identifiers

Classification(s) listed under the UAVG identifier indicate that no single majority rate prevailed for those classifications; however, 100% of the data reported for the classifications was union data. EXAMPLE: UAVG-OH-0010 08/29/2014. UAVG indicates that the rate is a weighted union average rate. OH indicates the state. The next number, 0010 in the example, is an internal number used in producing the wage determination. 08/29/2014 indicates the survey completion date for the classifications and rates under that identifier.

A UAVG rate will be updated once a year, usually in January of each year, to reflect a weighted average of the current negotiated/CBA rate of the union locals from which the rate is based.

WAGE DETERMINATION APPEALS PROCESS

1.) Has there been an initial decision in the matter? This can be:

- * an existing published wage determination
- * a survey underlying a wage determination
- * a Wage and Hour Division letter setting forth a position on a wage determination matter
- * a conformance (additional classification and rate) ruling

On survey related matters, initial contact, including requests for summaries of surveys, should be with the Wage and Hour National Office because National Office has responsibility for the Davis-Bacon survey program. If the response from this initial contact is not satisfactory, then the process described in 2.) and 3.) should be followed.

With regard to any other matter not yet ripe for the formal process described here, initial contact should be with the Branch of Construction Wage Determinations. Write to:

Branch of Construction Wage Determinations
Wage and Hour Division
U.S. Department of Labor
200 Constitution Avenue, N.W.
Washington, DC 20210

2.) If the answer to the question in 1.) is yes, then an interested party (those affected by the action) can request

review and reconsideration from the Wage and Hour Administrator (See 29 CFR Part 1.8 and 29 CFR Part 7). Write to:

Wage and Hour Administrator
U.S. Department of Labor
200 Constitution Avenue, N.W.
Washington, DC 20210

The request should be accompanied by a full statement of the interested party's position and by any information (wage payment data, project description, area practice material, etc.) that the requestor considers relevant to the issue.

3.) If the decision of the Administrator is not favorable, an interested party may appeal directly to the Administrative Review Board (formerly the Wage Appeals Board). Write to:

Administrative Review Board
U.S. Department of Labor
200 Constitution Avenue, N.W.
Washington, DC 20210

4.) All decisions by the Administrative Review Board are final.

=====

END OF GENERAL DECISION

..